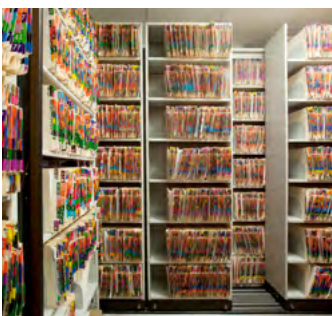


QUADRAL

SLIDING HIGH-DENSITY STORAGE SYSTEMS





MODULAR EXPANDABLE AFFORDABLE

MAXIMIZE STORAGE WITH MINIMAL FLOOR SPACE

QUADRAL

EASY TO MOVE AND RECONFIGURE

Use Quadral when you need to store items in a small room, next to a wall or any confined space that requires maximum storage capacity. The light, handle-free carriage base supports Montel's versatile Cabinet Style (Case-Type) or SmartShelf® (4-Post) shelving systems. The carriages moves laterally allowing you to make full use of your storage space without wasting a square inch. For high-density storage of relatively small and light items such as files, boxes, medications and parts, it's vastly superior to conventional filing and storage systems.

EXPANDABLE MODULAR FLOOR

Quadral is easy to relocate should you need to change your space at a later date. You can face the future with peace of mind since the modular floor units are expandable so you can easily add units eventually.



QUADRAL | BUSINESS



QUADRAL | FILE CABINETS MOUNTED ON MOBILE LATERAL SLIDING CARRIAGES



QUADRAL | VARIOUS ACCESSORIES

MOBILIZE TO MAXIMIZE

Eliminate the need for multiple space-wasting static aisles and use the total potential of your vertical and horizontal space with Quadral's modular high-density movable sliding storage system.

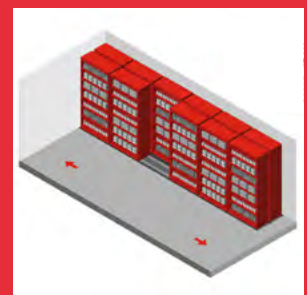
QUADRAL MOVED FRONT SHELVING SECTIONS ARE MOUNTED ON MOVABLE CARRIAGES THAT SLIDE LATERALLY ALLOWING ACCESS TO THE BACK ROW OF STATIONARY SECTIONS. QUADRAL INCREASES STORAGE CAPACITY IN ANY GIVEN AREA.



SLIDE LATERALLY TO THE LEFT



SLIDE LATERALLY TO THE RIGHT



SLIDE LATERALLY TO THE LEFT OR TO THE RIGHT. ADD AS MANY MODULAR MOBILE UNITS AND SHELVING SECTIONS ALONG THE WALL.

LEVERAGE LIMITED STORAGE SPACE WITH QUADRAL

IDEAL FOR CONFINED ROOMS OR ALONG NEAR WALLS TO SAVE SPACE

Proving that big is not necessarily best, Quadral is a compact, high-density movable shelving system that leverages your available space to make your filing storage as efficient as possible. It's an excellent alternative when space limitations prevent you from using one of Montel's larger mobile systems.

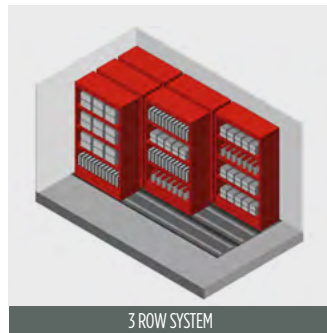
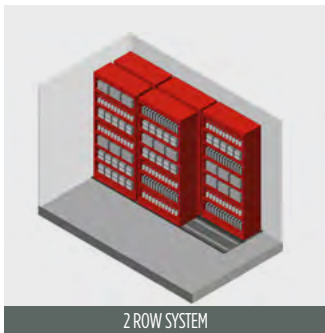
QUADRAL MOVES Laterally ALLOWING ACCESS TO THE BACK ROW OF STATIONARY SHELVING UNITS



ACCESSORIES

- CABINET STYLE (CASE-TYPE) OR SMARTSELF HYBRID SHELVING (4-POST)
- WIRE BOOK SUPPORTS
- LOCKABLE HINGED DOORS- DIVIDERS
- BIN DIVIDERS
- BOOK SUPPORTS
- SLOTTED SHELF & BACK SHELF
- PERFORATED SHELVES
- PERFORATED SIDE PANELS WITH CABINET-STYLE SHELVING (CASE-TYPE)
- PULL-OUT DRAWERS FOR FOR CDS, VIDEOTAPES, STATIONERY, ETC.
- SLIDING REFERENCE WORKING SHELF
- PULL-OUT SLOTTED DRAWER (HALF CLOSED)
- PULL-OUT SLOTTED DRAWER (CLOSED)
- SHELF BACK
- SUSPENSION BARS FOR OBLIQUE FOLDERS
- SLIDING FRAME FOR HANGING FILES
- RETRACTABLE DOOR
- FULL SIZE SHELF BACK
- EXPANDABLE MODULAR CARPETED FLOOR
- GARMENT RODS
- FRONT STOPS
- UNIVERSAL CROSSBARS WITH HANGING RODS

TWO OR THREE ROWS SLIDING STORAGE SYSTEMS TO MAXIMIZE SPACE



STANDARD DIMENSIONS

	24"	30"	36"	39 3/8"	42"			
WIDTH	61 cm	76 cm	91,5 cm	100 cm	107 cm			
HEIGHT	10"	12"	13"	15"	16"	18"		
	25,5 cm	30,5 cm	33 cm	38 cm	40,5 cm	46 cm		
HEIGHT*	39 1/2"	43 1/2"	45"	57"	69"	78"	87"	90"
	100 cm	110,5 cm	114 cm	145 cm	175 cm	198 cm	221 cm	229 cm

CAN ACCOMMODATE THE FOLLOWING MONTEL SHELVING SYSTEMS:

- Cabinet Style (Case-Type) for office spaces. The closed cabinet provides a clean and appealing environment.
- SmartShelf (4-Post) for back of the house areas, warehouses and garages.
- Aetnastak (Cantilever) for libraries and offices.



CABINET STYLE (CASE-TYPE)
IDEAL FOR OFFICE SPACES & CORPORATE STORAGE



SMARTSHELF® (4-POST)
IDEAL FOR BACK OF THE HOUSE AREAS, WAREHOUSES AND GARAGES

GET MORE VERTICAL & HORIZONTAL SPACE WITH SMARTSHELF® & QUADRAL

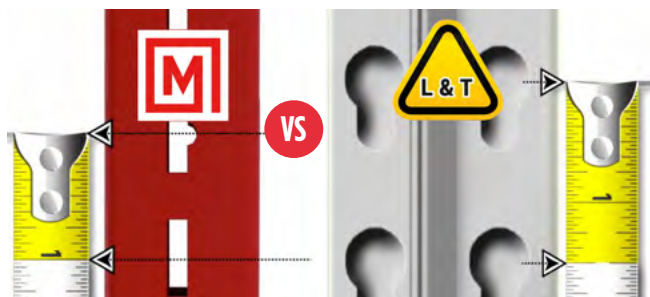


SMART SHELF®

TAKE SPACE EFFICIENCY TO A NEW LEVEL | MAXIMIZE YOUR STORAGE | OPTIMIZE YOUR SPACE

Our continuous quest for space optimization has led us to develop SmartShelf®, a shelving system that exceeds industry standards.

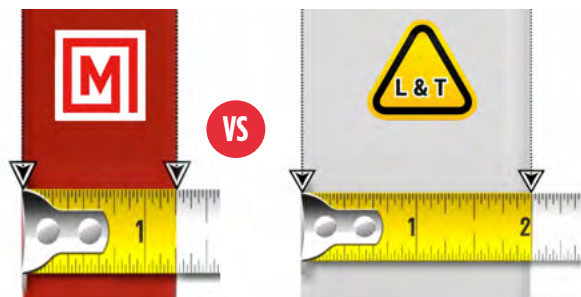
MORE STORAGE VERTICALLY
ADJUSTABLE SHELVES IN 1" (25.4 MM) INCREMENTS



1"
SMARTSHELF® HYBRID SHELVING
SYSTEM WITH HOOKS

1 1/2"
L&T COMMODITY SHELVING

MORE STORAGE HORIZONTALLY
3/4" (19 MM) MORE USABLE STORAGE PER SHELF



1 1/4"
SMARTSHELF® HYBRID SHELVING

2"
L&T COMMODITY SHELVING

DO THE SMARTSHELF® MATH

100 SECTIONS OF 97" (246.38 CM) HIGH WITH 8 TIERS OF BACK-TO-BACK SHELVING UNITS WOULD REPRESENT:

NOTE: WHAT ABOUT THE ADDITIONAL STORAGE VERTICALLY DUE TO THE 1" INCREMENTS VS. L&T AT 1 1/2" INCREMENTS. ADD THESE EXTRA LINEAR INCHES TO YOUR TOTAL.

8 TIERS
X 2 BACK-TO-BACK SHELVING UNITS
X 3/4" (19 MM) MORE STORAGE PER SHELF
= 12" (30.48 CM) MORE USABLE STORAGE PER SHELVING UNIT
X 100 SECTIONS
= **1,200" (30.48 M) ADDITIONAL LINEAR INCHES OF STORAGE WITH SMARTSHELF® VS. L&T**

WE BUILD SATISFACTION

Since 1924, Montel has pioneered high density mobile storage systems providing cost-efficient storage solutions using less space.

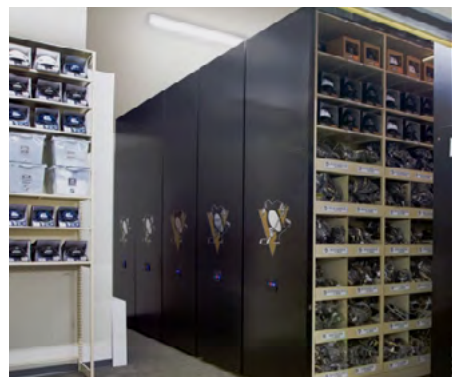
CUSTOM-BUILT FOR YOUR INDUSTRY
WE'VE MANUFACTURED AND INSTALLED THOUSANDS OF PROJECTS AROUND THE WORLD.



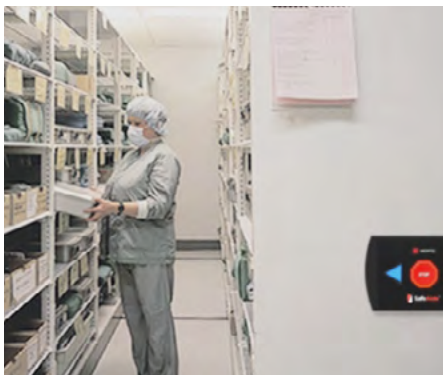
MOBILEX® MECHANICAL-ASSIST MOBILE SYSTEM WITH WITH 4D WIDE SPAN RACKING



SMARTSHELF® 4-POST HYBRID SHELVING SYSTEM



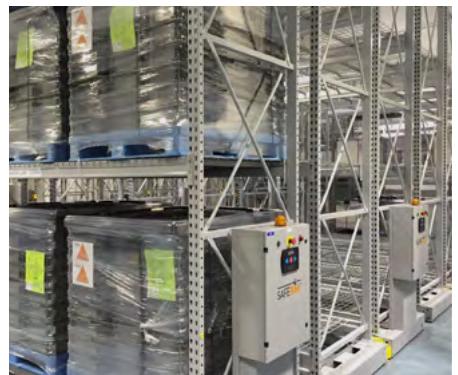
SAFEISLE® POWERED MOBILE SHELVING SYSTEM



SAFEISLE® POWERED MOBILE SHELVING SYSTEM



MOBILEX® MECHANICAL-ASSIST MOBILE SHELVING SYSTEM



SAFEERAK® POWERED MOBILE RACKING SYSTEM FOR COLD STORAGE

WHAT ELSE DO WE DO?
STORAGE SOLUTIONS THAT HELP YOU TO GROW FROM THE INSIDE, OPTIMIZE AND GET RESULTS.



HEAVY-DUTY MOBILE RACKING SYSTEMS



SHELVING SYSTEMS



INDUSTRIAL MODULAR DRAWERS



CABINETS



WORKBENCHES



HANGING STORAGE SCREENS & PANELS

WHY CHOOSE MONTEL STORAGE SOLUTIONS?

SAVE SPACE | SAVE TIME | SAVE MONEY



GET RESULTS FROM YOUR SQUARE FOOTAGE: FAST ROI

Save up to 50 % of your value generating space.



WORK WITH STORAGE-SAVVY EXPERTS

We manufacture the one and only solution. The best one.



TOTAL OFFER CUSTOMIZED TO YOUR NEEDS

We will go to any length, depth, width or height.



BETTER ORGANIZE YOUR SKUs

Gain productivity while inventory management & security are improved.



MEET YOUR ENVIRONMENTAL OBJECTIVES

Minimize your environmental impact by reducing your footprint.

OUR MISSION

THE EMPLOYEES OF MONTEL SET OUT A VERY PERSONAL OBJECTIVE: BUILD THE BEST STORAGE SYSTEMS IN THE WORLD.

Their talent, commitment and dedication have been put to the test numerous times.

At Montel, client satisfaction is an ongoing priority. Our highly competent Authorized Montel Distributors are specialists in providing turnkey project solutions including space planning, design and floor loading consulting services, and factory certified system installations. They are also committed to providing a high level of professionalism and an outstanding customer service before and after the sale.

MONTEL INTERNATIONAL PRESENCE



68
COUNTRIES

MONTEL ACHIEVED PRESTIGIOUS REALIZATIONS IN MORE THAN 68 COUNTRIES

65
DISTRIBUTORS

65 AUTHORIZED MONTEL DISTRIBUTORS AROUND THE WORLD

SINCE
1924

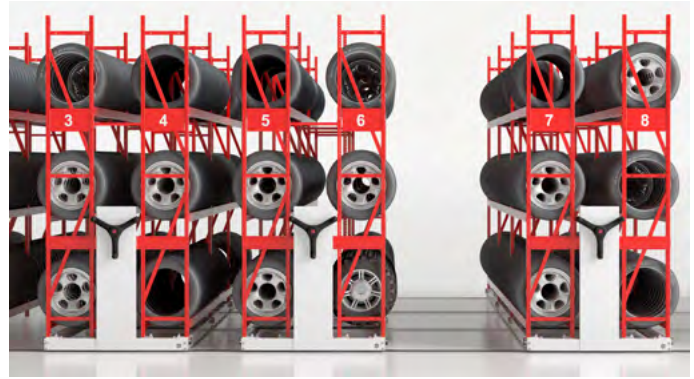
MORE THAN 9 DECADES OF INNOVATIVE STORAGE SOLUTIONS

ALSO AVAILABLE

INQUIRE ABOUT OTHER MONTEL HIGH-DENSITY MOBILE STORAGE SYSTEMS DESIGNED TO HOLD VARIOUS LOAD CAPACITIES. MOBILE SYSTEMS ARE EITHER POWERED ELECTRICALLY, OPERATED MECHANICALLY OR MANUALLY.



SAFEAISLE®



RACK&ROLL 16MA



MOBILEX®



SMARTSPACE 2M

CERTIFICATIONS & STANDARDS



For the most recent version of this document, please go to the Montel website at www.montel.com/en/design-center. In case of discrepancy, the web version takes precedence over any printed literature.



877-935-0236
info@montel.com
www.montel.com